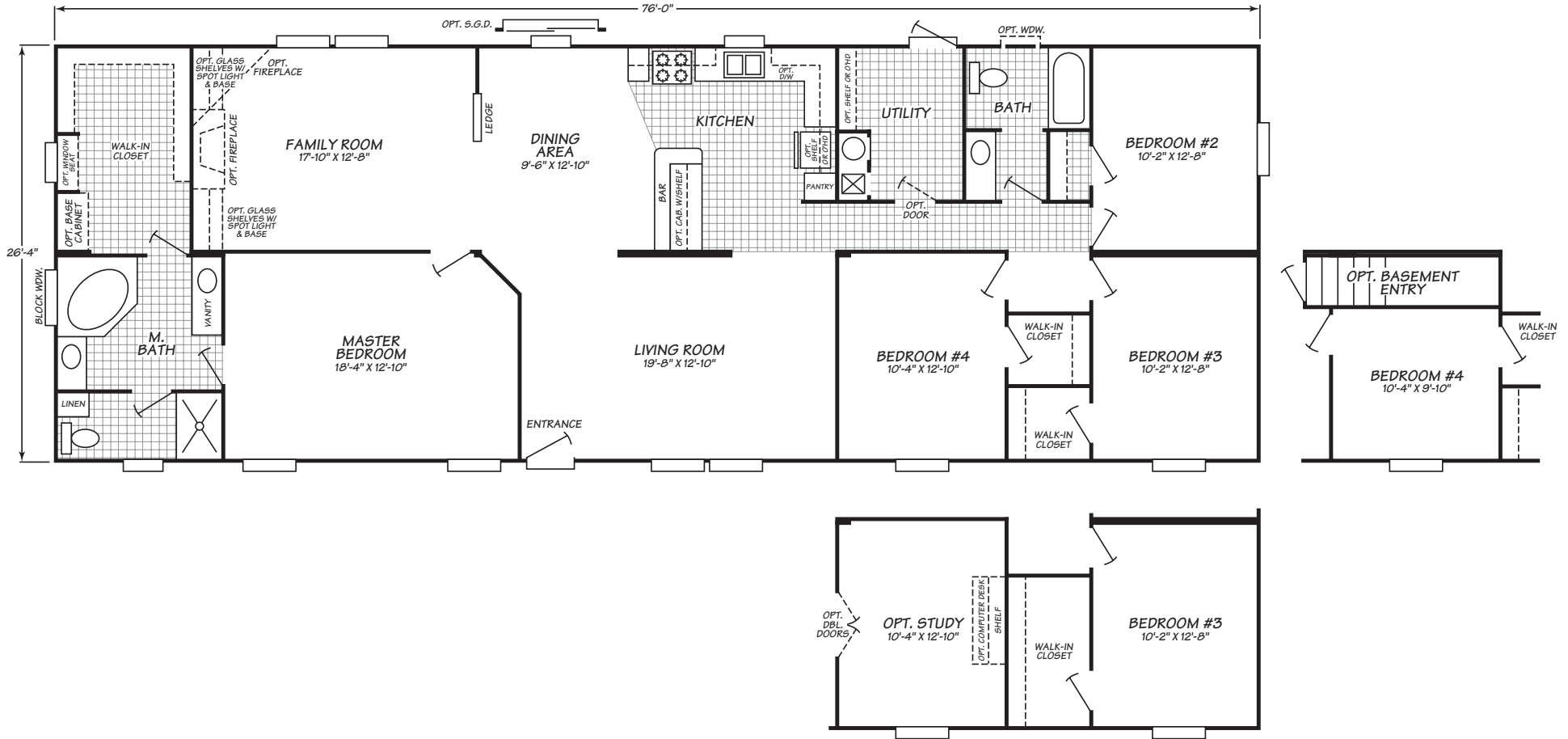


# Edgewood Series Model 4764W

4 Bedrooms • 2 Baths • 2,026 Square Feet



Windows shown reflect standard aluminum windows. Selection of optional thermal pane (vinyl) windows may affect the size and number of windows.

Fleetwood Homes reserves the right to change colors, prices, specifications, models, dimensions and materials without notice. Rendering and diagrams are meant to be representative and, in keeping with Fleetwood's policy of constant updating and improvement, may vary from the actual home. All dimensions are nominal and approximated. Square footage is measured from exterior wall to exterior wall, and is an approximate figure. Length indicated in floorplans is floor length only. The length of the hitch is not included. (Add four feet to arrive at transportable length.) Ask your retailer for specifics. PRICES AND SPECIFICATIONS SUBJECT TO CHANGE WITHOUT NOTICE OR OBLIGATION.

Interior	Exterior	Bath	Kitchen	Utilities, Safety & Energy	Options
<p><b>Cathedral Ceilings</b> Creates spacious rooms and enhances custom home look</p>	<p><b>2"x 4" Exterior Wall Frames, 16" on center</b> Superior structural strength</p>	<p><b>Bathroom Exhaust Fan</b> Quiet and powerful, increases ventilation</p>	<p><b>30" Overhead Cabinets</b> Convenient, accessible storage for kitchen equipment &amp; supplies</p>	<p><b>100 Amp Electrical Panel Box</b> Ample capacity for household power needs</p>	<p><b>2"x 6" Exterior Wall Frames, 16" on center</b> Additional structural strength while providing an increased R value of R19</p>
<p><b>Embossed Six Panel White Doors</b> Contemporary and stylish, creates a designer home look</p>	<p><b>2"x 6" Floor Joists, 16" on center (24' &amp; 28' homes)</b> Stable, strong foundation for home structure</p>	<p><b>Glamour Bath (model specific)</b> The ultimate luxury-includes a deep bathtub, separate shower, double sinks, and additional storage</p>	<p><b>Drawer Over Cabinet Construction</b> Efficient design enhances storage and keeps utensils close at hand</p>	<p><b>Exterior Electric Outlet</b> Convenient power access for outdoor working</p>	<p><b>Accent Interior Wall Panels</b> Adds a splash of color to enhance any room</p>
<p><b>Decorative Glass Light Fixtures</b> Durable and attractive, adds an appealing detail to room lighting</p>	<p><b>2"x 8" Floor Joists, 16" on center (16' &amp; 32' homes)</b> Stable, strong foundation for home structure</p>	<p><b>Laminate Vanity Top</b> Long-lasting, attractive, and easy to clean</p>	<p><b>No-Wax Vinyl Floors</b> Beautiful appearance and easy to care for</p>	<p><b>Exterior Door Lighting</b> Bright illumination improves safety and security at front and rear door entries</p>	<p><b>Appliance Packages</b> Add or upgrade appliances to suit style and taste</p>
<p><b>Nickel Finish Hardware</b> All light fixtures, door knobs and hinges adding a stylish and contemporary finish</p>	<p><b>30 lb. Roof Load</b> Structure engineered for extra strength to handle snow and wind loads</p>	<p><b>Porcelain Water Saver Toilets</b> Durable and fashionable, water saver feature helps save on utility bills</p>	<p><b>Stainless Steel Kitchen Sink</b> Durable, stain resistant sink is chip proof with easy to use lever faucet</p>	<p><b>Deadbolt Locksets</b> Added safety and security to exterior doors</p>	<p><b>Ceramic Kitchen &amp; Bath Tiles</b> Add great looking and easy to clean tile backsplashes and edging</p>
<p><b>Rebond Carpet Pad</b> Heavy-duty pad extends life of carpet</p>	<p><b>House Type Exterior Doors</b> Storm door standard on front door offering greater security &amp; protection from the weather</p>	<p><b>Bathtub Valance</b> Adds color and a finished look to bathrooms on all standard tub/shower fixtures</p>	<p><b>Whirlpool Appliances</b> Quality, dependability, and style-all backed by the Whirlpool warranty</p>	<p><b>30 Gallon Water Heater with Pan</b> Efficient hot water supply for laundry, bath, and kitchen</p>	<p><b>Upgraded Carpet</b> Luxurious, heavier weight carpet in designer colors, meets all FHA specifications</p>
<p><b>Valance At Windows</b> Add a designer touch to windows</p>	<p><b>Vinyl Siding</b> Durable, low maintenance, and never needs painting</p>	<p><b>Fiberglass Shingle Roof</b> Long-lasting and low maintenance, stands up to harsh weather</p>	<p><b>Zargen Drawer Guides</b> Durable, smooth to open and close</p>	<p><b>Gas Furnace</b> Clean, safe, high-efficiency heating</p>	<p><b>Drapery Packages</b> Elegant drapery treatments elevate any room and provide privacy</p>
<p><b>Ventilated Vinyl Coated Closet Shelving</b> Keep clothing and personal items organized with easy to clean shelving</p>	<p><b>Raised Panel Vinyl Shutters</b> Add style and dimension to windows along front door entry side of sectional homes and Front door entry side and right side end wall of single section homes</p>	<p><b>Smoke Detectors with Battery Back-up</b> Protect every resident from fire danger and potentially get lower insurance rates</p>	<p><b>R28 Ceiling, R11 Wall, R22 Floor Insulation</b> Helps lower utility bills and keeps home comfortable</p>	<p><b>Gas Range</b> High performance and easy to clean-cooks more evenly and quickly</p>	<p><b>Entertainment Centers (most homes)</b> Built-in cabinetry to house entertainment systems enhances custom home look</p>
<p><b>Vinyl Covered Gypsum Wall Panels</b> Attractive, easy to clean, and low maintenance</p>	<p><b>Thermal Windows</b> Tilt-in, easy to clean, Low E, thermalpane vinyl windows are standard on all models</p>	<p><b>Water Shut-off Valves</b> Quickly shut off water for repairs or in an emergency</p>	<p><b>Smoke Detectors with Battery Back-up</b> Protect every resident from fire danger and potentially get lower insurance rates</p>	<p><b>Water Shut-off Valves</b> Quickly shut off water for repairs or in an emergency</p>	<p><b>Gas or Wood Burning Fireplace</b> Add warmth and style with a beautiful fireplace</p>
<p><b>Floor Mounted Door Stops</b> Durable and stylish adding to a finished residential look</p>					<p><b>Hardwood Raised Panel Cabinet Doors</b> Long-lasting and beautiful, enriches the appearance of cabinets through out</p>
					<p><b>Stomp Texture Ceiling Finish</b> Ceiling treatment creates finished residential look</p>

Fleetwood Homes reserves the right to change colors, prices, specifications, models, dimensions and materials without notice. Rendering and diagrams are meant to be representative and, in keeping with Fleetwood's policy of constant updating and improvement, may vary from the actual home. All dimensions are nominal and approximated. Square footage is measured from exterior wall to exterior wall, and is an approximate figure. Length indicated in floorplans is floor length only. The length of the hitch is not included. (Add four feet to arrive at transportable length.) Ask your retailer for specifics. PRICES AND SPECIFICATIONS SUBJECT TO CHANGE WITHOUT NOTICE OR OBLIGATION.